

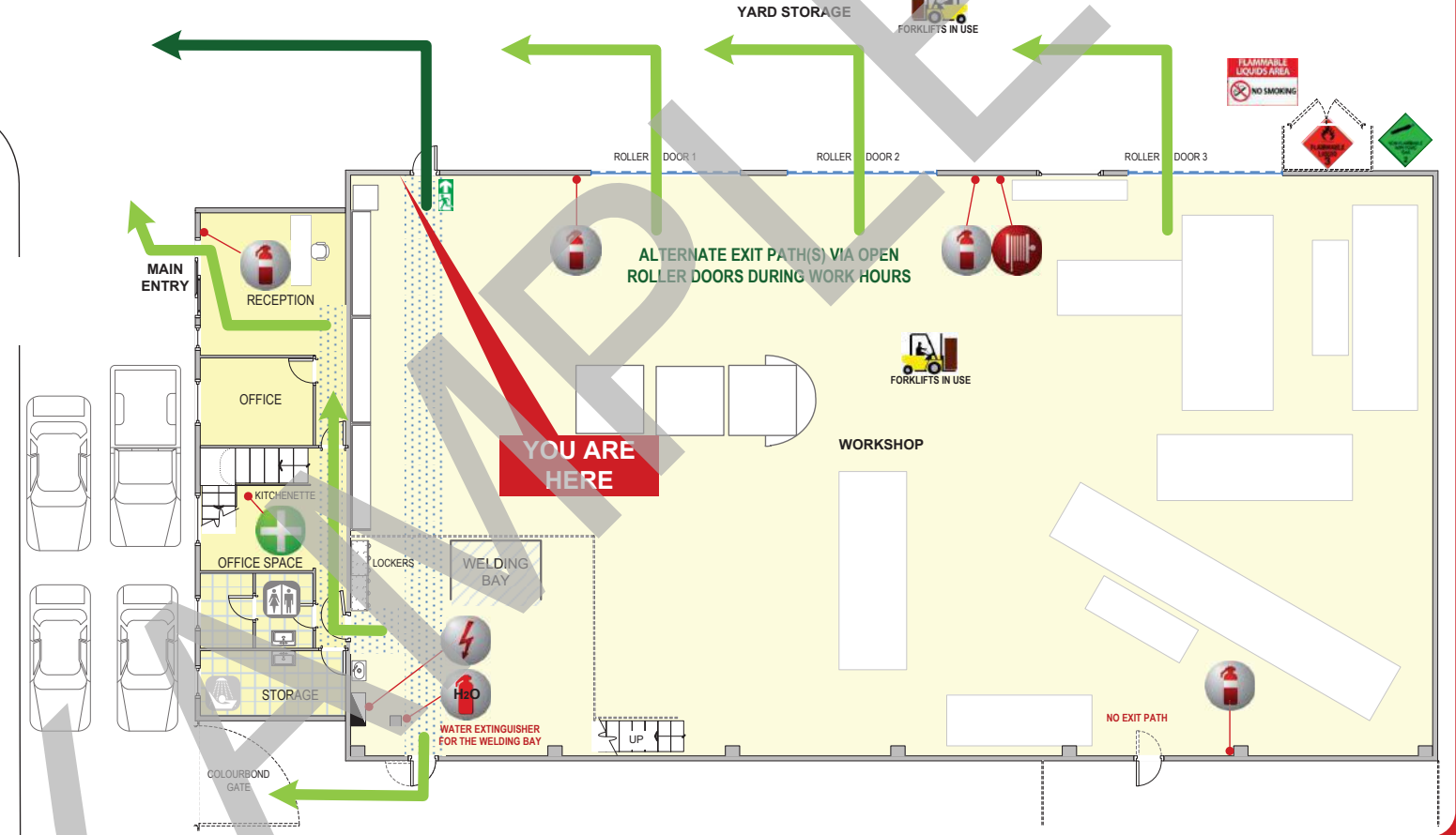
EVACUATION DIAGRAM

**AMBULANCE
POLICE
FIRE**

**000
EMERGENCY**

- LEGEND**
- DCP EXTINGUISHER
 - WATER (H₂O) EXTINGUISHER
 - FIRE HOSE REEL
 - EXIT PATHWAY
 - ALTERNATE EXIT PATHWAY
 - SWITCHBOARD
 - FIRST AID

- MOBILITY IMPAIRED PERSONS**
- Know the exit routes in the buildings that you frequent, and check these for suitability, even if they are not your normal route of travel.
 - Evacuate immediately upon hearing an evacuation announcement, assisted by a nominated person.



- IN CASE OF FIRE OR OTHER EMERGENCY**
- REMOVE** any persons in immediate danger and direct them to a safe place. Do not block Exit Paths. If the severity of smoke or fire warrants further evacuation, occupants should be moved through fire/smoke doors to a safer place.
 - ALERT** nearby persons of any danger immediately, and dial **000 (Triple Zero)** to ensure an **Emergency Services Response**
 - CONFINE** fire and smoke. As the area is evacuated and if safe, close doors and windows to stop the spread of smoke and fire.
 - EXTINGUISH** the fire if safe to do so. **EVACUATE** Should the emergency necessitate evacuation of the whole building, occupants will be directed from the safe place to an external **ASSEMBLY POINT AT THE QUINDUS STREET PUBLIC FOOTPATH** by Staff Wardens or the attending Emergency Services personnel. Report all missing persons to Emergency Services personnel.