



EVACUATION DIAGRAM

IN CASE OF FIRE

- R** REMOVE any persons in immediate danger if safe, assist the elderly and incapacitated.
- A** ALERT other occupants and nearby persons of any danger. Call Emergency Services on **000 (Triple Zero)**.
- C** CONFINE fire and smoke. If safe to do so, close doors and windows to confine smoke and fire. Keep low under the smoke.
- E** EXTINGUISH and control the fire (if safe to do so) or, **EVACUATE** to nominated safe Assembly Area.

LEGEND

DCP EXTINGUISHER



FIRE HOSE REEL



EXIT PATH



ALTERNATE EXIT PATH(S)



SWITCHBOARD



EMERGENCY LIGHT(S)



DRY CHEMICAL POWDER EXTINGUISHERS.

Red in colour with a white band, holds a bi-carbonate based powder. Used to extinguish Class A (carbonaceous) fires, on Class B (flammable liquid) fires and Class E (electrical) fires.

Best cleaned up with a vacuum cleaner.

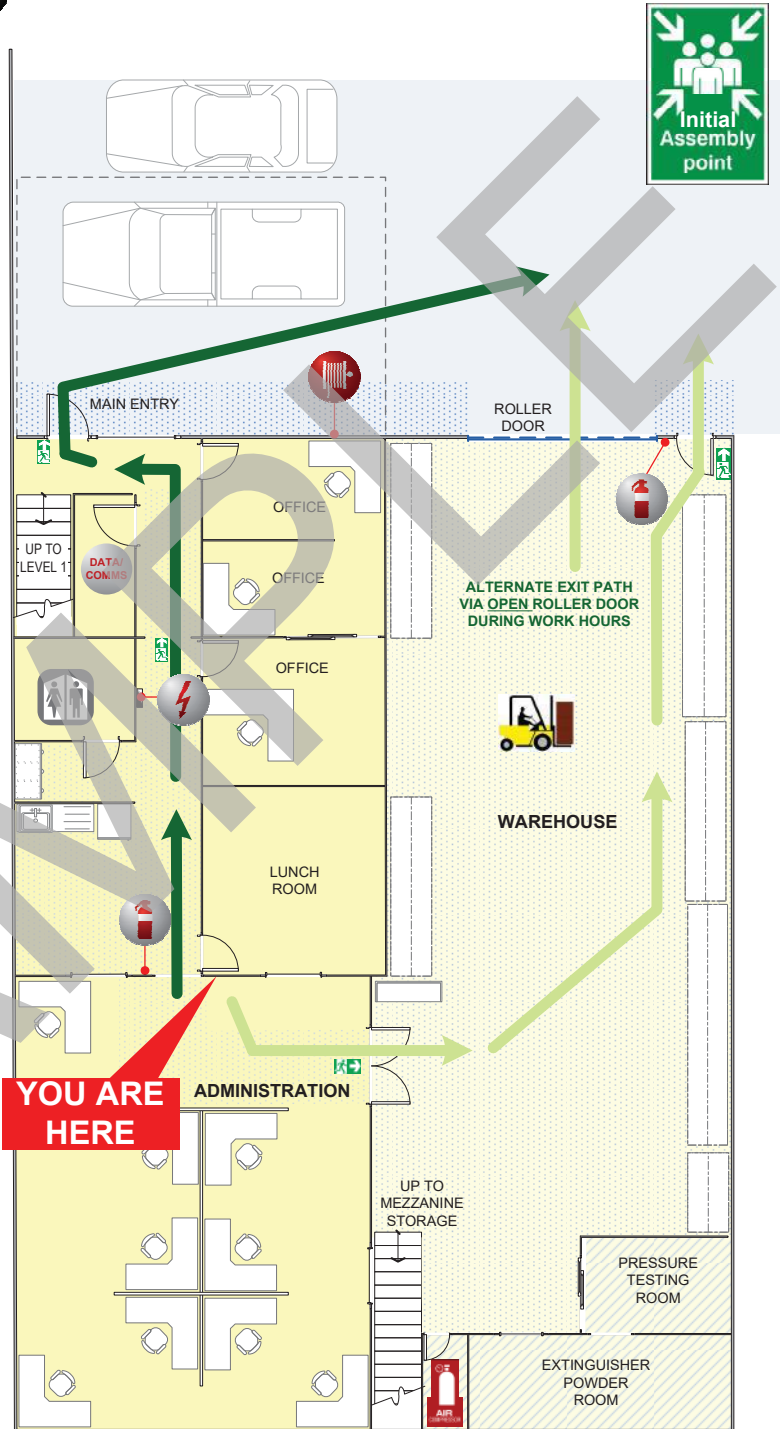


AMBULANCE POLICE FIRE



MOBILITY IMPAIRED PERSONS

should evacuate immediately on hearing the fire alarm or evacuate announcement, assisted by a nominated person.



EVACUATION PROCEDURES

1) Removal of people from the immediate Danger Area....

Occupants and staff in the immediate danger area are to assemble a safe distance away from the fire and smoke. When the area has been evacuated all doors and windows should be closed to contain fire.

2) **Removal to a Safer Area....** If the severity of the smoke or fire warrants further evacuation, occupants should be moved to the Final Assembly Point at Manly Road footpath.

3) **Complete Evacuation of Entire Complex....** Should the emergency necessitate evacuation of the whole building, occupants will be directed from the safe place to the **ASSEMBLY POINT** by the Fire Service or Emergency Officials.

4) **Roll Call....** To be conducted ASAP, to ensure all persons are accounted for.

*** Report all missing persons to **FIRE OFFICERS** ***